

**Govt. of India**  
**Ministry of Human Resource Development**  
**Dept. of School Education and Literacy**  
**Mid Day Meal Division**

**PAB-MDM meeting**  
**to consider and approve AWP&B 2018-19**

(Date of the meeting: 07.06.2018)



**APPRAISAL NOTE**

**State: Uttarakhand**

**INDEX**

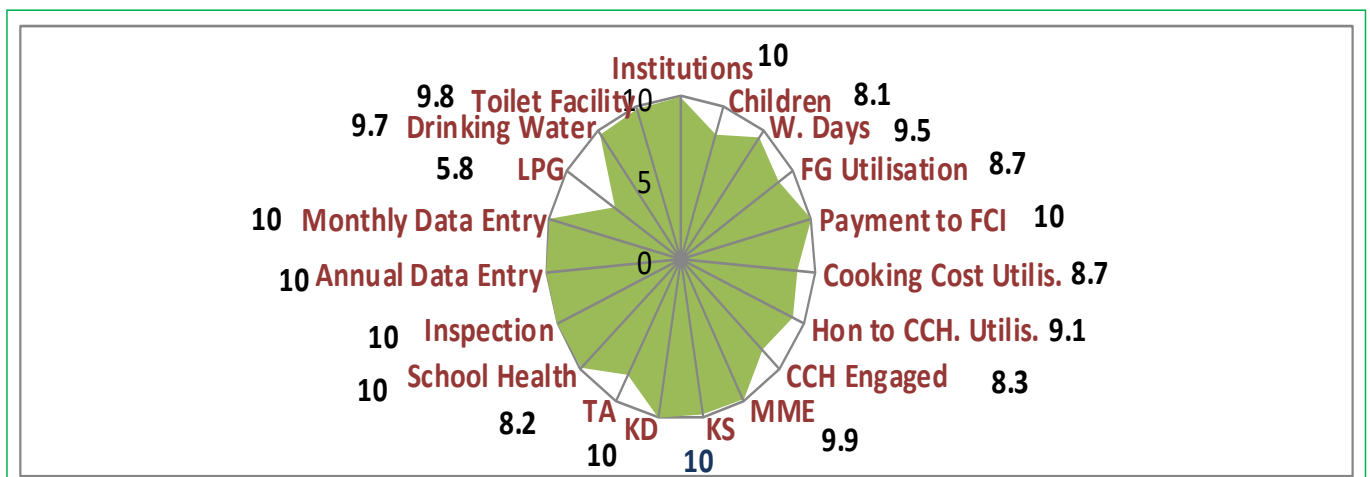
<b>Sl. No.</b>	<b>CHAPTER</b>	<b>Page no.</b>
<b>Overview</b>	Pre-requisite steps for submission of AWP&B	<b>2-5</b>
	Main Issues from Appraisal	
	Best practices	
<b>Part-A</b>	General Information	<b>6-9</b>
<b>Part-B</b>	Review of performance during 2017-18	<b>10-24</b>
<b>Part-C</b>	Recommendations of Appraisal team and quantification of variables for central assistance for 2018-19.	<b>25-29</b>
<b>Part-D</b>	Analysis sheet.	<b>30-43</b>

## Appraisal Note : Uttarakhand

### A. Overview : Status on Pre requisite steps required for submission of AWP&B

Pre-requisite step	Status
Plan should be approved by SSMC Meeting	Yes
Release of funds through e-transfer from State / District to at least 50% schools	Yes
100% payment of cost of food grains made to FCI	Yes (Till 31-03-2018)
100% payment of honorarium to cook-cum-helpers through e-transfer to their bank accounts.	Yes
Annual and Monthly data entry for the FY 2017-18 should be completed up to March 2018.	Yes (Annual – 100%, Avg. Monthly – 100%)
Emergency Medical Plan on the lines of the contingency plan of Odisha.	Yes
Submission of Plan through MDM-MIS	Yes
Action taken note on commitments given by the State Govt. during PAB Meeting of 2017-18	Yes
Action taken note on findings of reports of Monitoring Institute.	NA
Action plan for the testing of food samples, Number of food samples tested by accredited labs and findings	Yes. (Guideline issued to schools) (10 Sample has been tested by Punjab Biotech Incub. Mohali)
Separate and detailed MME plan	Yes
Plan submitted duly signed by the Pr. Secretary / Secretary of the State/UT within the scheduled date.	Yes

### B. i. Performance Score card : Year 2017-18 : -



**B.ii. Issues :**

- Delay in the release of funds from State to District (almost 2 months).
- Rs. 48.72 Lacs FCI outstanding as on 31-03-2018 (Reported by FCI).
- 48 Govt. Aided Schools in 2016-17, MDM is extended to only Upper Primary Children whereas the Primary Children have been deprived of MDM.
- 11 Days less coverage of working days (226 days out of 237 days approved).
- Only 58% schools have LPG connections and Balance are using firewood.
- Repeated poor coverage of children in some districts like Haridwar, Dehradun, Udham Singh Nagar, Champawat etc. since 2014-15.
- Construction of 286 Kitchen cum stores (amounting for Rs. 384.88 Lacs) are yet to be constructed. (Sanctioned in 2012-13)
- 15 Kitchen Devices (amounting for Rs. 0.75 Lacs) is yet to be procured. (Sanctioned in 2016-17).
- Only 9% Schools having Drinking Water Filtration facility.
- 11% Children still having without Aadhaar.
- Kitchen gardens established in 1023 (6%) schools only.
- Automated Monitoring System (AMS) – 76% Schools is on-board and max. 74% Schools reported on daily data.

**C) Best Practices:**

- 18 District Level Meeting held under the Chairmanship of District Magistrate.
- 9 District Level Meeting held under the Chairmanship of Senior Member of Parliament.
- SSMC has approved the 11 Month Honorarium to All Cook cum helpers (Bhojan Mata). (Additional budget will be met from State resources).
- Additional Rs. 1000.00 contributed by State for honorarium to each cook-cum-helper per month besides of Minimum mandatory state share i.e. Rs.100.00 (Total Honorarium is Rs.2000.00 per month)
- Incentive of Rs.1000/- in form of bonus is paid annually to each Cook-cum-helper in addition to honorarium.
- Rs. 1000 given to all schools for procuring soaps, aprons, head cover, gloves etc. Hoardings/Banner on Hand Wash sponsored by Canara Bank under CSR.

- Additional food items (Atirikt Poshan) i.e. fruit, Boiled Egg, Gud Papdi etc. have been provided by the State Govt. from its own resources in all schools once in a week for all the children. (The unit cost of above food item is Rs. 5.00 per child).
- All Cook cum helper (Bhojan Mata) is engaged in state is the mother of the child studying in that particular school.
- Hand Wash Campaign was initiated in all Govt., / Govt. Aided Schools.
- 100% Children have been screened in Health Check-up under RBSK.
- Rs.2564/- Paid as Food Safety Allowances for 3 Schools for 25 days due to Non-Availability of Food Grain reported by Automated Monitoring System (AMS).
- 26896 (98%) Cook cum Helpers are trained in a phased manner.

**D) Action Taken Note on the Assurances during PAB-MDM meeting 2017-18**

<b>Sr. No.</b>	<b>Issues</b>	<b>Action taken</b>
1	Delay in release of funds	State Government made the budget provision in the month of May 2017 during the FY 2017-18, whereas Government of India had released the fund as an Ad-hoc installment during the month of April, 2017. As a result, it has been delayed to release the fund relative to the budget provision. During 2017-18, the State Government has released the entire funds for all the components of State share and Central share to State Project Office before 31 <sup>st</sup> March, 2018.
2	Extension of MDMs only to upper primary category(in some schools)	The Proposal for extension of Mid Day Meal in 154 schools put on "State level steering and monitoring committee". The Government of Uttarakhand, vide letter no. 17/695/2017-18 Dated 03 January 2018, has instructed to State Project office to scrutinize intensively in existing non government aided primary and upper primary schools in Uttarakhand state where mid day meal scheme is to be considered for extending.
3	Coverage of Working days	The State has taken necessary action against the declining trend of coverage of working days through intense analysis of MIS. Now reports are showing better coverage in both primary and upper primary level. The main reason of being less coverage of working days due to heavy rain, natural calamity, local holidays, and roads are blocked in many hilly regions/far flung areas because of which schools get closed.
4	Coverage of children against enrolment	State has taken necessary action against the less coverage of children through intense analysis of MIS. The reports from April 2017 to March 2018 are showing better average coverage of children in the districts as under:

		<p><b><u>Average Coverage against Enrollment:</u></b>  Almora 93%, Bageshwar 91%, Chamoli 93%, Champawat 83%, Dehradun 80%, Haridwar 66%, Nainital 92%, Pauri 92%, Pithoragarh 88, Rudrprayag 94%, Tehri 91%, U.S. Nagar 74% and Uttarkashi 92%.</p>
5	Construction of Kitchen-cum-stores(KCSs)	<p>There are some schools where kitchen cum stores could not be constructed because of low enrollment. At present, in few schools, enrollment has drastically increased, therefore these schools are demanding for the construction of kitchen cum stores and the proposals have been submitted by the schools to the state project office, MDM, Dehradun. Earlier, some schools had the concern of land unavailability, so fund could not be transferred to the schools by that moment. Now the problem of land availability has been sort out in these schools, therefore the fund has been sent to the districts for re-construction of kitchen cum stores in selected districts.</p> <p>The significant instructions have also already been dispatched to all the districts to complete un-started kitchen cum stores and in-progress kitchen cum stores in time.</p>
6	Replacement for Kitchen Devices(KD)	<p>The amount of Rs. 106.40 Lac was sanctioned in the financial year 2015-16 and 2016-17 in order to replacement of kitchen devices, new kitchen devices and Aided schools. Accordingly, the fund of Rs. 105.65 Lac has been disbursed to the districts as yet.</p> <p>The rest of the amount Rs. 0.75 Lac will be transferred to remaining schools for kitchen devices which were sanctioned by G.O.I.</p>
7	FCI payment	<p>The Government of Uttarakhand vide letter no. 862/MDM/01-B/2017-18 Dated 15<sup>th</sup> March, 2018, the proposal amounting to Rs. 272.09 Lac for reimbursement of cost of food grains' bills submitted by Food Corporation of India during FY 2010-11 to 2016-17, has been submitted to MHRD.</p>
8	Automated Monitoring System	<p>There is a problem in network connectivity in remote areas of the state. Therefore, 13453 schools have been recorded in Automated Monitoring System in Central portal of Government of India.</p>
9	LPG in schools	<p>There are 17664 schools where Mid Day Meal is conducted, out of which 10302 schools have LPG connections including 4506 schools are covered with the help of "The Hans Foundation" and 58.32 percent all in all schools have been covered with the LPG connections as yet and still is in progress to maximize for providing LPG connections and chullahs.</p>
10	Requirement of cook-cum-helpers	<p>As per existing enrollment there is no need of cook-cum-helpers in the Uttarakhand State.</p>

**Introduction :**

National Programme of Nutritional support of Primary Education (NP-NSPE) popularly known as the Mid-day-meal (MDM) scheme was formally launched on the 15th August 1995. The scheme envisaged every child in primary school to be provided cooked meal during the school hours with a maximum content of 450 calories and 12 gm of protein each day of school. Earlier state was the part of Uttar Pradesh before 8 Nov. 2000. In Uttar Pradesh dry ration distribution pattern was observed for Mid-day-meal scheme. Children enrolled in primary schools to receive food grain to carry it home every month in the presence of their parents. Only rice or wheat was provided to the children. It was not felt sufficient from nutritional point of view.

With these efforts there was a slight improvement in enrolment but retention of these children in scheme is still remaining a challenge to the department and government. According to Health check-up drive under DPEP-III and SSA, it was noticed that about 50% children enrolled in primary schools are anaemic. Percentage of girls child is little higher. This shows that the pattern of providing MDM is not up to the satisfaction of the children as far the enrolment and retention are concerned.

While deciding a PIL the honourable Supreme Court directed to the GOI through all states and UTs to provide cooked nutritious meal to all children enrolled in primary school during school hours. Following the order of the honourable Apex Court Govt of Uttarakhand started the scheme for the 1st time in Sahaspur block of district Dehradun in the year 2001-02. The impact was promising enough to extend this scheme to all 13 districts of the state. This was followed by implementing the scheme in 26 blocks of all the districts (2 blocks from each district) as the second phase of the scheme in the year 2002-03. The experiment was appreciated and hailed from all the quarters of the state so much so that now it has become the vehicle for attainment of the goal of universalization of education at primary level. The Govt of Uttarakhand through Department of Education implemented the scheme in all primary schools, aided primary schools, EGS/AIE centres in the year 2003-04. The scheme has been a 100% success in terms of coverage at primary level.

Encouraged with the success the MDM scheme has also been extended in Upper Primary Schools in Educationally Backward Blocks (EBB) with effect from 01 January 2008 and further extended in all Upper Primary Schools of the state from the year 01 April 2008.

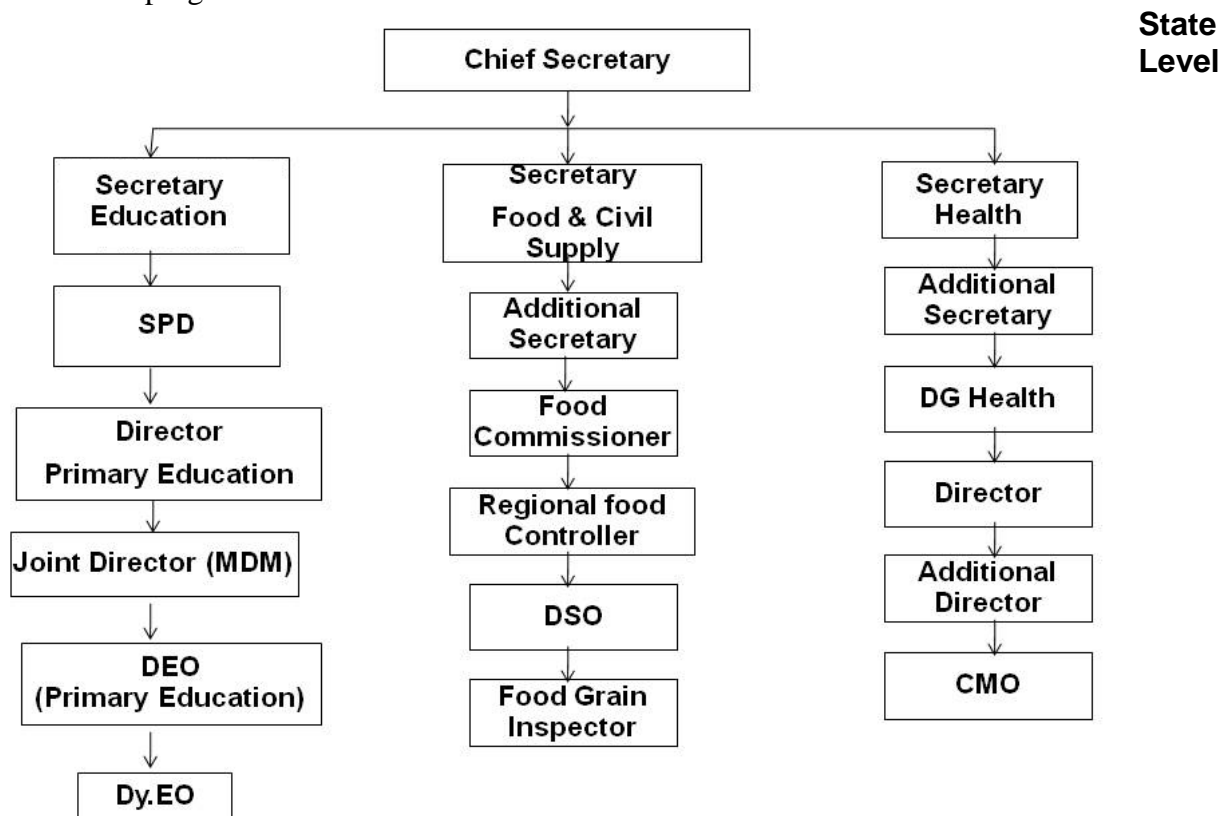
The direction made by Principal Secretary on the scheme are most focused on sound structural organization, cleanliness, management for food supply, quality of food grain, availability of funds and fuel supply, cooking process, inter departmental coordination through District Magistrate and responsibilities of the officials of concerned programme. A full fledged committee i.e. SMC is formed separately at school/village level to implement the scheme.

## 1.1 Management Structure:

At state level Department of Education is responsible for implementation of the scheme. Department of food and civil supply is responsible for providing food grains. At district level District Magistrate is deputed as a nodal officer. Under the guidance of District Magistrate, District Education Officer (Primary Education), and District Supply Officer (DSO) manages the mid day meal programme. At block level Dy. Education Officer is acting as nodal officer. Head Master and school management committee (SMC) is responsible for implementing the scheme at school level. The State Project Director (SPD) of "Uttarakhand council of Education for all" who is responsible for the overall monitoring and management of the programme.

The organizational chart is as follows

There are following dedicated staffs at various levels to manage, monitor and implement the programme.



Post	Sanctioned Post	Filled	Vacant	Remark
State Project Director	1	1	0	Nodal Officer in State
Joint Director	1	1	0	Departmental
Field Investigator	2	2	0	Filled by redeployment
Stenographer	1	0	1	To be filled by redeployment
Computer Operator	1	0	1	To be filled by redeployment
MIS Coordinator	1	1	0	By Outsourcing
Computer Operator	1	1	0	By Outsourcing
Coordinator	2	1	1	By Outsourcing
Assistant Accountant	1	1	0	By Outsourcing
Auditor	1	0	1	To be filled by Outsourcing
Peon	2	2	0	By Outsourcing

#### District Level

Post	Sanctioned Post	Filled	Vacant	Remark
DEO (Primary Education)	13	13	0	Nodal Officer in District
Coordinator	13	13	0	By Outsourcing
MIS Coordinator	13	12	1	By Outsourcing
Peon	13	13	0	By Outsourcing

#### Block Level

Post	Sanctioned Post	Filled	Vacant	Remark
Dy. Block Education Officer	95	95	00	Nodal Officer in Block
Official Staff at Block level offices	95	95	00	Honorarium of Rs 500 is given for additional work for MDM
Coordinator	95	00	95	To be filled by Outsourcing after receiving the additional MME grant from GOI



**1. Basic Information:**

**(Year 2017-18)**

S.No.	INDICATORS	STATUS		
<b>1. No. of Institutions</b>		PRY	U PRY	TOTAL
i)	Approved by MDM-PAB for 2017-18	12438	5292	17730
ii)	Covered during the year *	12356	5302	17658
<b>2. No. of Children</b>				
i)	Approved by MDM-PAB	387654	269669	657323
ii)	Enrollment as on 30.9.2017	437871	311725	749596
ii)	Average No. of children availed MDM during 01.04.2017 to 31.03.2018	356138	248816	604954
		[81%]*	[80%]*	[81%]*
<b>3. Coverage of children as per Quarterly Progress Report (QPR)</b>				
i)	Average no. of children availed MDM as per <b>QPR-1</b>	344439	244779	589218
		[79%]*	[79%]*	[79%]*
ii)	Average no. of children availed MDM as per <b>QPR-2</b>	343661	254652	598313
		[78%]*	[82%]*	[80%]*
iii)	Average no. of children availed MDM as per <b>QPR-3</b>	365687	259866	625553
		[84%]*	[83%]*	[83%]*
iv)	Average no. of children availed MDM as per <b>QPR-4</b>	354193	233033	587226
		[81%]*	[75%]*	[78%]*
<b>4. No. of Working Days (Primary, Upper Primary)</b>				
i)	Approved for <b>All 4 quarters</b>	237	237	--
ii)	Covered during <b>All 4 quarters</b>	228	224	--
<b>5. Per unit cooking cost Per child per day (in Rs.)</b>				
Central Share for cooking cost per child per day		3.72	5.56	--
State's contributions in cooking cost per child per day		0.41	0.62	--
AVERAGE UNIT COOKING COST PCPD		4.13	6.18	--

**Note : Some schools approved after PAB 2017-18.**

**\*percentage to Enrollment.**

## Part-B : Review of Performance in 2017-18 (01.04.2017 to 31.12.2018)

2. Based on the information provided by the State administration in its AWP&B 2018-19, the performance during 2017-18 (01.04.2017 to 31.03.2018) was reviewed. The major issues in implementation during 2017-18 are summarized as under: -

### 2.0 Coverage of Institutions

Coverage in terms of No. of institutions.

Difference between Existing and institutions covered (Achievement) –

#### i) **PRIMARY**

The number of existing institutions	= 12893
Number of institutions covered during 01.04.2017 to 31.03.2018	= 12356 (96%)

As per the information provided by the State Govt., 537 existing primary institutions have not been covered during 2017-18 due to various reasons like either school is merged with other school in case of low enrolment or Schools have been closed due to no enrolment etc.

#### ii) **UPPER PRIMARY WITH PRIMARY**

The number of existing institutions	= 82
Number of institutions covered during 01.04.2017 to 31.03.2018	= 75 (91%)

As per the information provided by the State Govt., 7 Upper Primary with Primary institutions have been Less more covered during 2017-18 due to No Enrollment in these 7 Schools in the State.

During Analysis, It is observed that 48 Upper Primary School has been recognized in Govt. Added Category and hence facilitated with MDM since 2016-17. It is against the humanity that only Upper Primary Category has been considered in Govt. Added School but Not considered for primary Category Children in the same campus of one school. State Govt. should review this policy and consider for both Primary and Upper Primary in the same campus in their Adoption policy for Govt. Added category school in the State.

#### iii) **UPPER PRIMARY WITHOUT PRIMARY**

The number of existing institutions	= 5349
Number of institutions covered during 01.04.2017 to 31.03.2018	= 5233 (97%)

As per the information provided by the State Govt., 116 existing upper primary without Primary institutions have not been covered during 2017-18 due to various reasons like No Enrollment, Self-Management, School merged with other school in case of low enrolment etc.

## 2.1 Coverage of Children

### 2.1.1 Coverage against enrolment :

a) **Primary - Coverage in terms of No. of children. Difference between Enrolment vs. Average No. of Children Aailed MDM (Achievement) (Refer Table 2.6 of the Analysis Sheet).**

Total Enrolment as on 30.09.2017 = 437871  
Average number of children aailed MDM during 01.04.17 to 31.03.2018 = 356138 (81%)

Sl. No.	Districts	No. of children as per Enrollment for 2017-18	Average number of children availing MDM	Diff	% Diff
1	Haridwar	100590	66508	34082	34%
2	USNagar	76317	56762	19555	26%
3	Dehradun	44120	35352	8768	20%
4	Champawat	13448	11225	2223	17%
5	Pithoragarh	20227	17786	2441	12%
6	Bageshwar	13179	12007	1172	9%
7	Tehri	30964	28215	2749	9%
8	Uttarkashi	18718	17127	1591	8%
9	Pauri	25852	23714	2138	8%
10	Nainital	35131	32273	2858	8%
11	Almora	25397	23552	1845	7%
12	Chamoli	21077	19574	1503	7%
13	Rudraprayag	12851	12043	808	6%
	<b>Total</b>	<b>437871</b>	<b>356138</b>	<b>81733</b>	<b>19%</b>

The coverage at State level is satisfactory and well above the national average of 75%. However, district wise analysis reveals that the performance in the Districts of Haridwar, US Nagar, Dehradun, Nainital and Champawat is below the State average.

b) **Upper Primary: Coverage in terms of No. of children. Difference between Enrolment vs Average No. of Children Aailed MDM (Achievement) – UPPER PRIMARY (Refer Table 2.7 of the Analysis Sheet).**

Total Enrolment as on 30.09.2017 = 311725  
Average number of children aailed MDM during 01.04.17 to 31.03.18 = 248816 (80%)

Sl. No.	Districts	No. of children as per Enrollment for 2017-18	Average number of children availing MDM	Diff	% Diff
1	Haridwar	51285	32107	19178	37%
2	USNagar	46582	34126	12456	27%
3	Dehradun	32489	24670	7819	24%
4	Champawat	10973	8836	2137	19%
5	Almora	23527	20136	3391	14%
6	Bageshwar	10748	9283	1465	14%
7	Tehri	26857	23246	3611	13%
8	Pithoragarh	16306	14237	2069	13%
9	Chamoli	15947	13992	1955	12%
10	Pauri	23377	20559	2818	12%
11	Nainital	29335	25800	3535	12%
12	Uttarkashi	12739	11333	1406	11%
13	Rudraprayag	11560	10491	1069	9%
	<b>Total</b>	<b>311725</b>	<b>248816</b>	<b>62909</b>	<b>20%</b>

Like primary coverage of children at upper primary level in the State is satisfactory and well above the national average of 75%. However, district wise analysis reveals that the performance in the Districts of Haridwar, US Nagar and Dehradun is below the State average.

It would be priceworthy to mention that these Districts are in the same status since 2013-14. State Govt. should see this issue, find out the reason for low coverage and should take an appropriate action on the issue of these districts. Accordingly State Govt. should focus on how improve the Attendance / Coverage in school of these districts.

### 2.1.2 Coverage against PAB-MDM approval :

a) **Primary : Coverage in terms of No. of children. Difference between PAB Approval (Target) vs. Average No. of Children Availing MDM (Achievement)**  
(Refer Table 2.4 of the Analysis Sheet).

The number of children approved by MDM PAB for 2017-18 = 387654  
Average number of children availed MDM during 01.04.2017 to 31.03.2018 = 356138 (92%)

b) **Upper Primary: Coverage in terms of No. of children. Difference between PAB Approval (Target) Vs Average No. of Children Availing MDM (Achievement)**  
(Refer Table 2.5 of the Analysis Sheet).

The number of children approved by MDM PAB for 2017-18 = 269669  
Average number of children availed MDM during 01.04.2017 to 31.03.2018 = 248816 (92%)

**2.1.3 No. of Meals: Difference between No. of meal to be served (Target) Vs. No. of meals Served (Achievement)- PY+U PY (Refer Table 2.8 & 2.9 of the Analysis Sheet).**

The number of meals to be served during 01.04.2017 to 31.03.2018 = **15.57 Crore**

The number of meals served during 01.04.2017 to 31.03.2018 = **13.58 Crore (87%)**

**2.2 FOODGRAINS (PRIMARY + UPPER PRIMARY)**

**2.2.1 Level of Opening Balance as on 01.04.2017: (Refer Table 3.2 of the Analysis Sheet).**

The State has 1855.31 MTs (10%) of food-grains as opening balance against the total allocation of 18774.14 MTs for 2017-18 as on 1.4.2017.

**2.2.2 Level of unspent balance as on 31.03.2018: (Refer Table 3.3 of the Analysis Sheet).**

The State level closing balance as on 31.03.2018 is 2407.14 MTs (13%) against the total allocation of 18774.14 MTs. However, the district wise analysis of data reveals that one of the district i.e. Nainital (-3%) is having Negative unspent balance at the end of the third quarter of 2017-18. The State Govt. needs to check the allocation mechanism of food grains to correct these situations.

**2.2.3 Availability of Food grains: (01.04.2017 to 31.03.2018) :(Refer Table 3.5 of the Analysis sheet)**

Considering that after completion of the Financial Year i.e. 31.03.2018, the districts should have availability of at least 85% of the food grains allocation. State level availability as on 31.03.2018 was 18768.55 MT (99.97%) of the total allocation of 18774.14 MT..

**2.2.4 Utilization of food grains: (Refer Table 3.7 of the Analysis sheet)**

An analysis of the utilization of food grains during 2017-18 shows that State has utilized 16361 MT (87%) of the allocated food grains.

**2.2.5 Payment of cost of foodgrains to FCI:(Refer Table 3.9 of the Analysis sheet)**

The FCI has submitted bills for Rs.518.66 Lacs during 1.4.2017 to 31.03.2018 towards supply of cost of Food grains. The State has made payment for Rs. 565.01 Lacs (109%) (including previous years outstanding of Rs. 46.36 Lacs).

As per reported by FCI as on 31-03-2018, the outstanding payment for previous years is Rs. 48.72 Lacs.

State Govt. is advised to take the necessary action to clear all the pending Bills of FCI and same in the form of Monthly Joint statement duly signed by FCI Officials and Education department Officials should be submit to MHRD, Govt. of India on monthly basis to avoid this delay.

## **2.3 COOKING COST (PRIMARY + UPPER PRIMARY)**

### **2.3.1 Level of Opening balance as on 01.04.2017 : (Refer Table 4.1.1 of the Analysis Sheet)**

The State had reported Rs.788.13 Lacs (10%) opening balance against Allocation of Rs. 7742.12 Lacs at the beginning of the financial year 2017-18.

### **2.3.2 Level of closing balance as on 31.03.2018 : (Refer Table 4.1.2 of the Analysis Sheet)**

The State had closing balance of Rs. 995.18 Lacs (13%) against Allocation of Rs. 7742.12 Lacs towards cooking cost as on 31.03.2018.

It is important to mention that if once State Govt. made the provision then State should provide their state share in advance so that the situation of negative balance of Cooking Cost could avoid and MDM could run smoothly in schools.

### **2.3.3 Utilization of Cooking cost:(Refer Table 4.5 of the Analysis Sheet)**

Considering that after completion of Financial Year by 31.03.2018, the districts should have utilized at least 80% of the allocation of cooking cost. State level utilization is Rs. 6748.94 Lacs (87%). At the district level the utilization ranges between 82% to 98%.

## **2.4 Reconciliation of Utilisation and performance during 2017-18 (1.4.2017 to 31.03.2018)**

### **2.4.1 Mismatch in utilization of Food grains vis-à-vis cooking cost: (Refer Table – 5.1 of Analysis Sheet)**

Ideally the percentage utilization of cooking cost and food grains should tally with each other. The data furnished in the AWP&B reveals that there is same utilization of cooking cost (87%) and food grains (87%), whereas State Coverage is around 80%. Ideally all these parameters should in same line.

## **2.5 Cook-Cum-Helper (PRIMARY + UPPER PRIMARY):**

MDM-PAB has approved 32989 cook-cum-helpers to be engaged during 2017-18 in the State, the State has engaged 27375 cook-cum-helpers. The State has not proposed to engage any additional cook-cum-helpers to the already approved number. The State has utilized Rs. 6013.14 Lacs (91%) of the allocated funds Rs. 6597.80 Lacs towards payment of honorarium to cook cum helper. (Refer Table – 6.2 of Analysis Sheet).

## **2.6 Utilization of MME(Refer Table – 7.3 of Analysis Sheet)**

Against the allocation of Rs. 194.97 lakh as Central Assistance towards MME funds, the State has utilized Rs. 192.90 lakh (99%). As per MDMS guidelines 50% of the MME funds are earmarked for school level expenditures, out of these funds Rs. 95.95 Lacs (49%) has been utilized at the school level.

## **2.7 Utilization of Transportation Assistance***(Refer Table – 8.3 of Analysis Sheet)*

Against the allocation of Rs. 425.75 Lacs as Central Assistance towards funds for Transportation Assistance the State has utilized Rs. 350.40 lakh. The State has made 82% payment for the quantity of food grains lifted from FCI and transported to the schools.

## **2.8 Construction of Kitchen-cum-stores (KS)***(Reference Table -9.1.2 of Analysis Sheet)*

Central assistance of Rs. 14999.88 Lakh has been released for construction of 15933 Kitchen-cum-Stores.

Out of 15933 kitchen-cum-stores sanctioned till 2017-18, 15611 (98%) Kitchen-cum-stores have been constructed, Construction work is in progress for 63 (0.4%) kitchen-cum-stores. The State Government has not started any construction work for kitchen-cum-stores in 286 (1.8%) schools.

State Govt has reported that due to increase in Enrollment in district Champawat (5 Units), Dehradun (14 Units) and Pauri (8 Units), State has constructed 27 Kitchen cum Store out of Total sanctioned by Govt. of India.

If we analyses then we find that Enrollment is continuously going down. In this circumstances, State Govt. should review their policy to create the an additional infrastructure in Schools.

Also it is important to mention that the Pending 286 KS which has been sanctioned by Govt. of India during 2012-13, is yet to start. State Govt. should submit the action plan to complete these pending KS at earliest.

## **2.9 Procurement of Kitchen devices(KD)***(Reference Table -9.2.2 of Analysis sheet)*

Central assistance for 18199 KD (New) for Rs. 909.95 Lacs has been released towards procurement of kitchen devices during 2006-07 to 2017-18. The State has reported that out of this,18184 KD for Rs. 909.20 Lacs has been procured and rest of 15 KD has to procured. State Govt. should procured this pending KD and supplied to concerned school at earliest.

Central assistance for 17283 KD (Replacement) for Rs. 864.15 Lacs has been released towards procurement for Replacement of kitchen devices during 2012-13 to 2017-18. As per State Govt. reported, All the Procurement for Replacement (100%) of 17283 Unit KD for Rs. 864.15 Lacs has been done by state.

### **3. Data Entry Status on the MIS Web Portal**

### **3. Data Entry Status on the MIS Web Portal**

In order to smooth function of MDMS, Ministry of HRD, MDM Division has developed web based monitoring system i.e. Web based MIS in collaboration with NIC. The purpose of development of Automated Monitoring System is to capture the daily data from school level. The purpose of Automated Monitoring System is to capture the daily data sent by Head Master / Teacher from school regarding No. of meal served today / on particular date.

#### **3.1 Automated Monitoring Systems (AMS)**

District wise Meals Served on : 15 May'2018 Uttarakhand								
S.No.	District	Total Schools	Reported Schools	% Reported Schools	Total Enrolment	Reported Schools Enrolment	Meals Served	Meals Served Percentage
1	ALMORA	1905	1293	68%	53335	38983	29322	75.22%
2	BAGESHWAR	821	557	68%	25048	17054	13498	79.15%
3	CHAMOLI	1396	935	67%	37896	26339	22890	86.91%
4	CHAMPAWAT	714	505	71%	25676	19175	14632	76.31%
5	DEHRADUN	1438	1010	70%	77148	55352	39627	71.59%
6	GARHWAL	2267	1497	66%	54088	37084	27285	73.58%
7	HARDWAR	1061	567	53%	146238	74788	42754	57.17%
8	NAINITAL	1432	925	65%	66475	44488	32854	73.85%
9	PITHORAGARH	1586	759	48%	39080	19778	15361	77.67%
10	RUDRAPRAYAG	812	567	70%	25695	18622	15252	81.90%
11	TEHRI GARHWAL	2007	1425	71%	61317	44185	33668	76.20%
12	UDHAM SINGH NAGAR	1222	880	72%	124775	85079	55002	64.65%
13	UTTARKASHI	1077	647	60%	32908	20395	16042	78.66%
	<b>Total</b>	<b>17738</b>	<b>11567</b>	<b>65%</b>	<b>769679</b>	<b>501322</b>	<b>358187</b>	<b>71.45%</b>

As per above data, It is clear that the State Meal served Percentage Average is 71% against the Reported School Enrolment.

State Govt. should initiate towards 100% school should be on-board for MDMs daily data transfer on Automated Monitoring System. None of the district achieved 100% School reporting on this Automated Monitoring System. There is need to these district to achieve the target of on-board of 100% school reporting on this Automated Monitoring System. State Govt. should see this issue and do the corrective measures.

#### **3.2 Annual Data Entry:**

Ministry of HRD, MDM Division has developed web based monitoring system i.e. Web based MIS in collaboration with NIC.

In the Web portal, State/District/Block users have to make Annual and Monthly data entry into the web portal through online. The State should monitor data entry activities to be made timely manner by District/Block users into the portal. The Annual and monthly data entry status as on March, 2018 of the State are given below:-



It is appreciated that State has almost completed 100% annual data entry. The district wise annual data entry status is given below:-

<b>FY-2017-18</b>					
<b>Annual Data Entry Status_UTTARAKHAND</b>					
S. No.	District	Total Schools	Completed(Saved)	Pending	% Completed
1	ALMORA	1864	1864	0	100%
2	BAGESHWAR	819	819	0	100%
3	CHAMOLI	1406	1406	0	100%
4	CHAMPAWAT	714	714	0	100%
5	DEHRADUN	1442	1442	0	100%
6	GARHWAL	2224	2224	0	100%
7	HARDWAR	1086	1086	0	100%
8	NAINITAL	1427	1427	0	100%
9	PITHORAGARH	1559	1559	0	100%
10	RUDRAPRAYAG	814	814	0	100%
11	TEHRI GARHWAL	1988	1988	0	100%
12	UDHAM SINGH NAGAR	1255	1255	0	100%
13	UTTARKASHI	1066	1066	0	100%
	<b>Total</b>	<b>17664</b>	<b>17664</b>	<b>0</b>	<b>100%</b>
Source: <a href="http://www.trgmdm.nic.in">www.trgmdm.nic.in</a> as on 16 May'18 till 15:48 hrs					

As per above Annual data for 2017-18, It is clear that most of the districts has frozen their Annual data.

### 3.3 Monthly Data Entry

State has almost completed monthly data entry for FY 2017-18 for all the schools. Average Monthly the data entry status up to March, 2018 at State level is almost 100%. The details of the data entry status are given below:

(Figures in %)

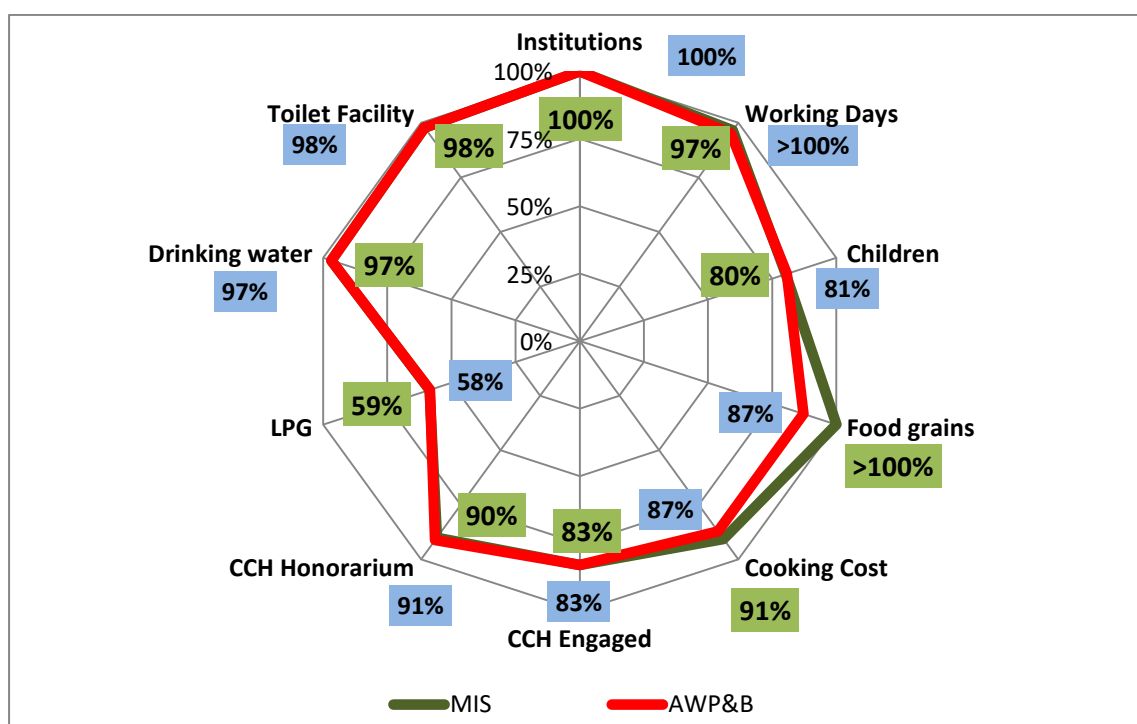
<b>FY 2017-18</b>																
<b>Monthly Data Entry Status_UTTARAKHAND</b>																
S. No.	District	Total Schools	Freeze Schools	% April	% May	% June	% July	% Aug	% Sept	% Oct	% Nov	% Dec	Jan%	Feb %	Mar %	Average %
1	ALMORA	1864	1864	100%	100%	100%	100%	100%	100%	100%	100%	100%	100%	100%	100%	100%
2	BAGESHWAR	819	819	100%	100%	100%	100%	100%	100%	100%	100%	100%	100%	100%	100%	100%
3	CHAMOLI	1406	1406	100%	100%	100%	100%	100%	100%	100%	100%	100%	100%	100%	100%	100%
4	CHAMPAWAT	714	714	100%	100%	100%	100%	100%	100%	100%	100%	100%	100%	100%	100%	100%
5	DEHRADUN	1442	1442	100%	100%	100%	100%	100%	100%	100%	100%	100%	100%	100%	100%	100%
6	GARHWAL	2224	2224	100%	100%	100%	100%	100%	100%	100%	100%	100%	100%	100%	100%	100%
7	HARDWAR	1086	1086	100%	100%	100%	100%	100%	100%	100%	100%	100%	100%	100%	100%	100%
8	NAINITAL	1427	1427	100%	100%	100%	100%	100%	100%	100%	100%	100%	100%	100%	100%	100%
9	PITHORAGARH	1559	1559	100%	100%	100%	100%	100%	100%	100%	100%	100%	100%	100%	100%	100%
10	RUDRAPRAYAG	814	814	100%	100%	100%	100%	100%	100%	100%	100%	100%	100%	100%	100%	100%
11	TEHRI GARHWAL	1988	1988	100%	100%	100%	100%	100%	100%	100%	100%	100%	100%	100%	100%	100%
12	UDHAM SINGH NAGAR	1255	1255	100%	100%	100%	100%	100%	100%	100%	100%	100%	100%	100%	100%	100%
13	UTTARKASHI	1066	1066	100%	100%	100%	100%	100%	100%	100%	100%	100%	100%	100%	100%	100%
	<b>Total</b>	<b>17664</b>	<b>17664</b>	<b>100%</b>	<b>100%</b>	<b>100%</b>	<b>100%</b>	<b>100%</b>	<b>100%</b>	<b>100%</b>	<b>100%</b>	<b>100%</b>	<b>100%</b>	<b>100%</b>	<b>100%</b>	<b>100%</b>
Source: <a href="http://www.trgmdm.nic.in">www.trgmdm.nic.in</a> as on 16 May'18 till 15:50 hrs																

MHRD, Govt. of India appreciate the State Govt. initiative taken towards time bound reporting /data entry in to the MDM-MIS web portal.

### 3.4 Mismatch in Data from MIS and AWP&B :-

COMPONENT	MIS	AWP&B
Institutions	17664	17664
Working Days	229	226
Children	601758	604954
Food grains (In MT)	20001	16361
Cooking Cost (Rs. in Lacs)	7022	6749
CCH Engaged	27375	27375
CCH Honorarium (Rs. in Lacs)	5944	6013
LPG	10341	10304
Drinking water	17084	17084
Toilet Facility	17272	17272

The graphical representation of the differences in data from MDM-MIS and as submitted by the State through Annual Work Plan & Budget is given below:



#### **4. Release of funds**

The state government makes budgetary arrangement in the annual budget of the state. After receiving the central share, State Government releases its Share and transfers the funds in the heads of Department of Education (Primary Education). Thereafter, the State Project Directorate receives the fund and transfers the fund to the concerning districts as per their demand.

The funds are released at the different levels through the mode of E-Transfer.

As soon as, the Government of India releases the Central Share then the State Government also release the State Share without delay. Within a month all the funds are transferred as Central Share and State Share to the District authority through the mode of E-Transfer. Afterwards, the District Authority forwards the fund to the school authority.

The main reason for getting delayed to release the funds at different levels is Network connectivity problem at the remote areas due to the O.F.C. (optical fibre cable) breakdown of banking server.

State Government releases the funds to each and every school timely. The schools already have the buffer stock under the head of cooking cost and food grains in case if it is delayed in releasing funds to schools.

There is no initiative taken by the State Government for pre-positioning of funds with the implementing agencies.

#### **5. System for payment of cost of food grains to FCI**

FCI raise the bill of food grain by the name of DEO (Primary Education). District Supply Officer (DSO) verifies the bill and the amount is paid to FCI through demand draft within 20 days. A Government Order is issued vide letter no. 1454/XXIV (1)/2010-25/2007 dated 6 December, 2010 by the state government in this regard.

No pendency has been found in FY 2017-18.

No pendency has been found for liquidating the bills of previous year.

Bimonthly meeting is conducted by the state nodal officer with the official of FCI/RFC regarding reconciliation of food grains. The representatives of FCI attend the SLSMC meeting while it is convened in the State. The instructions have issued to districts that the meetings should be convened of District Nodal Officers and FCI on the regular basis.

Some of the District Nodal Officers submit the reports of such meeting to State Project Office quarterly instead of 7th of next month.

The reconciliation of food grains payments bills with FCI are made on monthly basis.

The main reason of delaying payment to FCI is sometimes lifting of food grains are done from couple of locations in few districts, therefore it is a bit problem to receive and verify the bills from all the destinations at the same time.

As per State Govt. Reported, there is no delay in payment of cost of food grains to FCI. But as per Reported by FCI as on 31-03-2018, there is Outstanding Payment of FCI for Rs. 48.72 Lacs. State Govt. should see and resolve the issue of outstanding payment of FCI by sending a Joint Statement on Monthly basis duly signed by FCI Officials and State Education Department Officials.

## 7. Menu

The day wise menu is not prepared by State Level. Orders/Instructions are issued to districts for making a weekly menu. In general, rice, pulse and vegetables based menu is practiced in maximum schools. The pulses are changed every day. The weekly menu also contains local edible items and local food habits of the children. It encourages the local farmers to sell their local products in the market.

Additional food items (Atrikit Poshan) i.e. fruit, Boiled Egg, Gud Papdi etc. have been provided by the State Government from its own resources for children in all schools once in a week. The Day is decided by the convenience of district. The unit cost of above food item is Rs. 5.00 per child.



In compliance of the directions of Government of India, the instructions had already been issued to all districts to utilize the Double Fortified Salt and Fortified Edible oil. The Double Fortified Salt is not available in the local market easily. Hence, best quality iodized salt is being used instead of Double Fortified Salt for preparation of food. The Fortified edible oil is a bit expensive as compared to the normal edible oil in the market. Therefore, normal edible oil is being used in the maximum number of schools.

Menu is decided by the School Management Committee according to the local food habits and easily availability of food products.

To improve the micronutrient status of children, a recipe booklet has been prepared by Home Science Department, G.B.Pant University of Agriculture & Technology, Pantnagar named "Micronutrients Enriched Nutritious and Delicious

Recipe Booklet". This booklet contains around 30 recipes based on local ingredients. These booklets made available to each and every school.

In State, The Mid Day Meal has been served in all schools in summers at 10:30am to 11:00am and in winter at 12:30pm to 01:00pm.

## 8. Capacity Building

Different training modules are prepared by the MDM Cell, SSA and SIEMAT. Regular training programmes are arranged for the strengthening of different officials as:

In financial year 2014-15 around 26896 cook cum helpers trained through SCERT and in financial year 2013-14, 60 cook cum helpers trained as Master Trainer (MT) from IHM, Dehradun.

During Financial year 2017-18, No cook cum helpers were trained under Mid Day Meal Scheme.



### Different Training Modules which includes the concept of MDM

Name of Module	Module Prepared by	Prepared for	Issues Covered
<b>Orientation Module on MDM</b>	MDM Cell	DEO (Pry. Edu.), BEO, Dy. EOs	Concept and Objective of MDM, Norms, Rules,
<b>Workshop on MDM</b>	MDM Cell	DEO (Pry. Edu.), BEO, Dy. EOs	
<b>Training Module- "Jagriti"</b>	SSA	Teachers of Primary and Upper Primary level under 20 days in service teacher training	Coordination with stakeholders other and other departments, Nutrition,
<b>"Prayas"</b>	SIEMAT	BRC and CRC	Health, Hygiene, Monitoring and supervision etc.
<b>"Prayan"</b>	SIEMAT	BEO and Dy.Eos	
<b>"Prabodh"</b>	SIEMAT	Principals	

Additionally training is conducted in State level and District level for strengthening the mid day meal scheme of coordinators and other officials of the respective scheme.

**Details about Modules used for training, Master Trainers, Venues etc.**

<b>Name of Module</b>	<b>Module Prepared by</b>	<b>Master Trainer</b>	<b>Venue</b>
<b>Orientation Module on MDM</b>	MDM Cell	JD (MDM) & Field Investigator	SPO Meeting Hall
<b>Workshop on MDM</b>	MDM Cell	JD (MDM) & Field Investigator	SPO Meeting Hall
<b>Training Module- "Jagriti"</b>	SSA	Senior subject teacher	BRC/CRC
<b>"Prayas"</b>	SIEMAT	Master Trainer of SIEMAT	SIEMAT Hall
<b>"Prayan"</b>	SIEMAT	Master Trainer of SIEMAT	SIEMAT Hall
<b>"Prabodh"</b>	SIEMAT	Master Trainer of SIEMAT	SIEMAT Hall

**The target for the next year is as follows:**

<b>Training Programme</b>	<b>Month</b>	<b>Participants</b>
<b>MIS Coordinator Meeting/training</b>	April/May 2018	All coordinator and MDM Official
<b>AMS training</b>	May 2018	Head teachers or SMC members
<b>Training preparation for of AWP&amp;B</b>	January 2019	All coordinators and other Official

**9. Tasting of Meal**

Orders are circulated to all schools to maintain food test register in school. Signature of the head master, assistant teacher or other officials is compulsory before meals are served to children.

Food tasting Register is maintained in every school. It is mandatory that Parents, Teacher, Community Members, Cook cum Helper or any other person has to taste the meals before serving to the children. Parents and members of SMC are motivated for checking food each and every day according to roster during SMCs meetings

The food sampling of 10 schools in Dehradun, Haridwar, Tehri Garhwal and Pauri Garhwal district have been carried out by "Punjab Biotechnology Incubator, Mohali, Punjab" and the report has been received at state project office. Henceforth the sharing report has been dispatched to Ministry of human resource development.

There is no lab affiliated by NABL in the state, hence the testing of food samples has been carried out by other state.

Due to non availability of LAB affiliated by NABL in the State, the protocols for testing of Meals, frequency of lifting and testing of samples could not be made.

There are 30 samples of cooked food viz. Rice, Pulse; Vegetables have been picked from 10 Primary and Upper Primary schools. **The reports have been found below the prescribed norms.**

The instructions have been circulated to all Districts for ensuring implementation of guidelines regarding quality of the foods in accordance with prescribed norms of Mid Day Meal stated by Government of India.

#### 10. Grievance Redressal Mechanism

Toll free number has been established at state level to strengthen Grievance Redressal Mechanism.

**Toll Free Number – 1800 180 4132**

In financial year 2017-18 the detail of complaints/suggestions received till March 2017 was duly forwarded to concerned districts for necessary actions. These complaints are mainly regarding the sub-standard of food grains, honorarium is not paid in time to cook cum helpers, cooking cost and food grain not received in time and transport assistance is not being received timely.

Complaint/Suggestion through Toll Free Number		Complaint/Suggestion through Media	
Total Registered	Total Redressed	Total Registered	Total Redressed
08	06	08	05

As soon as the complaints registered on Toll Free or comes in knowledge through Print/Electronic media, the instructions issued to concerned authority for disposal of complaints. The maximum time period for dispose-off these complaints is 30 days.

On the basis of nature of complaints, instructions issued to district officials to sort out the complaints and to satisfy the complainant. If there is any serious irregularity is found then it is enquired and find out the facts of enquiry report afterwards, if any concerning person is found accused then disciplinary actions are taken against him.

## **11. Contingency Plan to avoid any untoward incident**

- Government Orders are issued regarding the management, supervision, safety and tasting of food before serving to children.
- Government Orders are issued regarding hand washing before and after lunch/Tiffin.
- Hand washing campaign was launched and wide publicity of programme was done through banners, hoarding and press release.
- Government Orders are issued about safety, hygiene & security of the food grains.
- Use of branded condiments, oils & pulses in MDM.
- Regular meeting of SMCs, Block/District level steering cum monitoring committee.
- Regular meetings of district vigilance and monitoring committee.
- Government Orders are issued to all CMOs to check the adulteration in the food grains and other condiments available in local market.
- Government Orders are issued regarding management, monitoring and evaluation of the scheme.
- During lifting of food grains, joint inspections are done by the member of FCI/Food Grain Inspector of concerned DSO, a member nominated by District Magistrate and a member of Department of Education. Sample is collected at the time of lifting by above members of Joint Committee.
- All important telephone numbers of nearest hospital, doctors and other officials of education department should be either painted on the walls of the Kitchen cum Store or class room.

--oOo--



**Part-C :Recommendations of Appraisal Team for 2018-19**

**PAB -MDM decisions**

No	Details		State's Proposal for 2018-19		Recommendations by Appraisal Team for 2018-19	
1	No. of Children & Institutions					
1.1	<b>Primary</b>		<b>No. of institutions</b>	<b>No. of Children</b>	<b>No. of institutions</b>	<b>No. of Children</b>
1.1.1	Govt. + Govt. aided + LB schools		12217	347189	12217	347189
1.1.2	Special Training Centers (NCLP)		22	666	22	666
1.1.3	Madarsa / Maqtab		117	17832	117	17832
	TOTAL (1.1)		12356	365687	12356	365687
1.2	<b>Upper Primary</b>					
1.2.1	Govt. + Govt. aided + LB schools		5268	256541	5268	256541
1.2.2	Special Training Centers		0	0	0	0
1.2.3	Madarsa/Maqtab		40	3325	40	3325
	Total (1.2)		5308	259866	5308	259866
1.3	Drought					
1.3.1	Primary		0	0	0	0
1.3.2	Upper Primary		0	0	0	0
	Total (1.3)		0	0	0	0
	GRAND TOTAL (1.1 + 1.2 + 1.3)		17664	625553	17664	625553
2	No. of Working days					
2.1	Primary			235		235
2.2	Upper Primary			235		235
2.3	NCLP			0		0
2.4	Drought	Primary		0		0
		Upper Primary		0		0
3	No. of Cook-cum Helpers*					
3.1	Approved cook-cum-helpers for 2017-18					32989
3.2	State Proposal for CCH				32989 (No Additional)	
3.3	Approval of CCH for FY 2017-18					32989
4	Kitchen-cum-store			55*		55*
5	Kitchen Devices	New Schools		44		44
		Replacement		2495		2495
* 55 KS = 44 Old + 11 New (Kitchen cum Store (KS) for Govt. Aided School)						

#### **4. Kitchen-cum-stores (KS)**

MHRD, Govt. of India has already sanctioned 15933 Kitchen cum stores to the State Government. Out of this, State Govt. has completed construction of 15611 KS, 63 KS construction in-progress and 286 KS are yet to start. State Govt. should submit there action plan to complete these pending work of KS in time bound manner.

State has submitted their proposal for 55 kitchen cum stores (44 old + 11 New for Govt. Aided School) for 2018-19.

#### **5. Kitchen Devices (KD)**

Currently State has Total 17664 Institutions who is serving MDM. State has got sanctioned already 18199 KD (New) in past. Out of this, 18184 KD has been procured and 15 is yet to procured. Due to Low or No Enrolment, State Govt. decided and closed these School.

State has submitted the Proposal for 44 KD (New) for Madarsa (Recongnised by State Govt. and supported by SSA) & for Replacement of 2495 KD (695+1800 sanctioned in 2012-13).

## State: Uttarakhand

### QUANTIFICATION OF CENTRAL ASSISTANCE FOR 2018-19

(As per revised norms after revision of cooking cost by 7.5% w.e.f. 1<sup>st</sup> April, 2018) \$

#### A. Food grains

Sl. No.	Stage	No. of Children	No. of Working Days	Quantity in MTs.
1	Primary (@ 100 gms per child per school day)	365687	235	8593.64
2	Up. Primary (@150 gms per child per school day)	259866	235	9160.28
3	NCLP (@150 gms per child per school day)	0	0	0.00
4	Drought	0	0	0
4.1	Primary	0	0	0
4.2	Upper Primary	0	0	0
<b>TOTAL</b>		<b>625553</b>		<b>17753.92</b>

#### B. Cost of Foodgrains, Cooking cost, Transport Assistance, Hon. to cook-cum-helpers and Management Monitoring and Evaluation (MME)

Sl. No.	Component/norm	Amount admissible (Rs. In Lacs)
1	2	3
<b>Primary</b>		
1	Cost of Food grains @ Rs. 3000/- per MT for 8593.64 MT rice + Tax - 2.5%	264.25
2	<b>Unit Cooking Cost- Rs. 4.13 per day / per child for 365687 children for 235 days</b>	
2.1	<b>Central Share @ Rs. 3.72 per child/day</b>	3196.84
2.2	<b>Minimum Mandatory State Share @ 0.41 per day/per</b>	352.34
3	<b>Transportation Cost @ Rs. 2516.48 Per MT food grains</b> (365687 x 235 days x 0.0001 MT x Rs.2516.48)	216.26
4	<b>Honorarium for cook cum Helper</b>	

4.1	<b>Central Share - (21561 x Rs.900x 10 months)</b>	1940.49
4.2	<b>Minimum Mandatory State Share - (21561 x Rs. 100 x 10 months)</b>	215.61
5	Management Monitoring and Evaluation (MME) @ 1.8% of the i) Cost of food grains ii) Cooking cost iii) Cost of transportation and iv) Honorarium to cook – cum-helpers	101.12
<b>TOTAL - {1+2.1 +3+4.1+5}</b>		<b>5718.96</b>
<b>Upper Primary</b>		
6	Cost of Food grains @Rs. 3000/- per MT for 9160.28 MT rice + Tax - 2.5%	281.68
7	<b>Unit Cooking Cost 6.18 per day / per child for 259866 children for 235 days</b>	
7.1	<b>Central share @ Rs.5.56 per child/day</b>	3395.41
7.2	<b>Minimum Mandatory State Share @ Rs.0.62 per child/day</b>	378.62
8	<b>Transportation Cost @ Rs. 2516.48 Per MT food grains</b> (259866 x 235 days x 0.00015 x 2516.48)	230.52
9	<b>Honorarium to cook cum Helper</b>	
9.1	<b>Central Share - (11428 x Rs.900x 10 months)</b>	1028.52
9.2	<b>Minimum Mandatory State Share- (11428 x Rs.100x 10 months)</b>	114.28
10	Management Monitoring and Evaluation (MME) @ 1.8% of the 1) Cost of food grains 2) Cooking cost 3) Cost of transportation and 4) Honorarium to cook – cum-helpers	88.85
<b>TOTAL - {6+7.1 +8+9.1+10}</b>		<b>5024.97</b>
<b>NCLP</b>		
11	Cost of Food grains @Rs. 3000/- per MT for 00.00 MT rice + cess-0%	0.00

12	<b>Unit Cooking Cost 6.18 per day / per child for 00 children for 00 days</b>	
12.1	<b>Central share @ Rs.5.56 per child/day</b>	0.00
12.2	<b>Minimum Mandatory State Share @ Rs.0.62 per child/day</b>	0.00
13	<b>Transportation cost @ Rs. 1524.90 Per MT food grains</b>	0.00
	(0x 0 days x 0.00015 x 1524.90)	
14	Management Monitoring and Evaluation (MME) @ 1.8% of the	0.00
	1) Cost of food grains	
	2) Cooking cost	
	3) Cost of transportation and 4) Honorarium to cook – cum-helpers	
<b>TOTAL - {11+12.1 +13+14}</b>		<b>0.00</b>
<b>Total (Primary + Upper Primary + NCLP)</b>		<b>10743.93</b>
15	<b>Kitchen Shed -- (55)</b>	<b>150.90</b>
16	<b>Kitchen Devices -- New -- (44)</b>	<b>2.20</b>
	<b>Kitchen Devices -- Replacement -- (2495)</b>	<b>124.75</b>
<b>GRAND TOTAL - (1-16)</b>		<b>11021.79</b>

- C. Drought : NIL
- D. Non-recurring : Rs. 277.85 Lacs
- E. Total Requirement of Funds for 2018-19

(Rs. in Lakh)

Component		<u>As per revised norms after revision of cooking cost by 7.5% w.e.f. 1<sup>st</sup> April, 2017</u>	
		Centre	Minimum mandatory State share
Recurring	Normal	10743.93	1060.85
	Drought	0.00	0.00
Non- recurring		277.85	16.77
<b>Total</b>		<b>11021.79</b>	<b>1077.62</b>

\$: Subject to approval of enhancement of cooking cost by 7.5% by competent authority.

--oOo--